

**SERVING WASHINGTON COUNTY
RESIDENTS SINCE 1918,**

the University of Wisconsin-Madison, Division of Extension Washington County educators take pride in being engaged throughout Washington County bringing the knowledge and resources of the University of Wisconsin to residents. Educators work alongside the people of Wisconsin to improve lives and community by delivering educational programs in the following areas:



Agriculture



Community Development



Human Development and Relationships



Positive Youth Development



Extension

UNIVERSITY OF WISCONSIN-MADISON



Land Use and Planning Committee

Carroll Merry-Chair,
Todd Bultman,
Brian Krebs,
Brian Gallitz,
Jodi Schulteis,
Larry Strupp

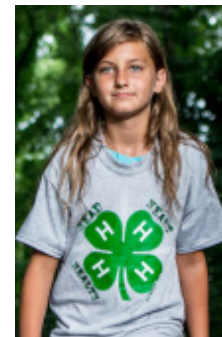
Area Extension Director

Cindy Sarkady
cindy.sarkady@wisc.edu
262-689-4101



Extension

UNIVERSITY OF WISCONSIN-MADISON
WASHINGTON COUNTY



**TRANSFORMING LIVES AND
COMMUNITIES**

**185+
PARTNERS**



**200+
PROGRAMS**



**1200+
VOLUNTEERS**



**6000+
CONTACTS**



333 E. Washington St. Suite 1200
West bend, WI 53095
P. 262-335-4477
F. 262-335-4863
Relay: 711

MONDAY - FRIDAY
8:00 am to 4:30 pm

washington.extension.wisc.edu



@ExtWashCo

An EEO/AA employer, University of Wisconsin-Madison Division of Extension provides equal opportunities in employment and programming including Title VI, Title IX, the Americans with Disabilities Act (ADA) and Section 504 of the Rehabilitation Act requirements

We Teach, Learn, Lead & Serve



HUMAN DEVELOPMENT

Carol Bralich

Human Development and
Relationships Educator
carol.bralich@wisc.edu

- Family Financial Security
- Community building on behalf of children, youth and families
- Early childhood education
- Family decision-making about health and care-giving



AGRICULTURE

*Fond du Lac, Ozaukee, Sheboygan,
and Washington Counties*

Providing unbiased,
research-based resources to
the agriculture community
to improve profitability,
productivity, and vitality.

Liz Gartman

Regional Crops Educator
liz.gartman@wisc.edu



POSITIVE YOUTH DEVELOPMENT

Ron Jakubisin

4-H Youth Development Educator
ron.jakubisin@wisc.edu



- Youth & adult leadership development
- Youth in public leadership and civic engagement
- 4-H community club development
- Community collaborations for youth and families

Kelly Dione

Community Youth Development
Educator

Fond du Lac and Washington Counties
kelly.dione@wisc.edu

- Education to improve youth's life-skills, leadership skills & civic engagement
- Youth/adult partnership development to address local issues
- Community outreach/ collaboration with coalitions & organizations to enhance youth-focused programming



COMMUNITY DEVELOPMENT

- Organizational development and strategic planning for non-profits
- Local government education and public policy analysis
- Community and economic development
- Staff Development through Real Colors(R)

